

Instruction of Master BMS communicate with PC

One . Required hardware

1. A desk computer (or laptop)

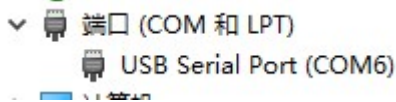
2. Converter of RS485 to USB .

UT-891 converter of UTai is recommended, which is compatible with this system.

3. the upper computer software (AF_BMS MODUBUS)is required

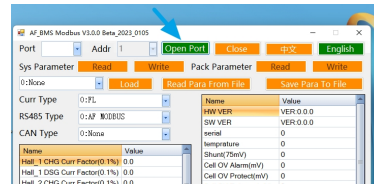


Two . Connect the converter of the USB to RS485 to the computer, and install the converter driver on the computer. In the computer setup, Check the port number automatically assigned by the computer in the device manager. for example , this is COM6.



Three . Open the configuration software on your computer.

1 . Select the correct port. Click Open Serial Port.



2. Configure the parameters according to your battery. For example, you used 4 battery packs in series. Each battery pack is 16 cells in series . Modify the parameters of the installation picture. Write the configuration parameters after the modification.

名称	数值
采集芯片数量	4
总串数	64
总温度数	12
主控串数	0
主控温度数	0
1#从控串数	16
1#从控温度数	3
2#从控串数	16
2#从控温度数	3
3#从控串数	16
3#从控温度数	3
4#从控串数	16
4#从控温度数	3
5#从控串数	0
5#从控温度数	0
6#从控串数	0
6#从控温度数	0
7#从控串数	0
7#从控温度数	0
8#从控串数	0
8#从控温度数	0

3.The Similar things are done to modification of the protection parameter.
After the reading is complete, you need to modify the protection parameters。



4.Master BMS have several commonly used inverter manufacturers' protocols built in.
You can make choices.

5.The modified configuration parameters and protection parameters can be read respectively
and saved to the computer file. Configure parameters and protection parameters

After the data is read from the file, it will be automatically loaded to the parameter table.
Then click "Write parameter" respectively. You can set configuration parameters and insure
The protection parameters are written into the Master BMS.